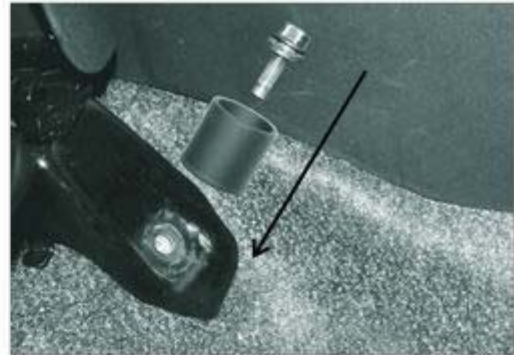
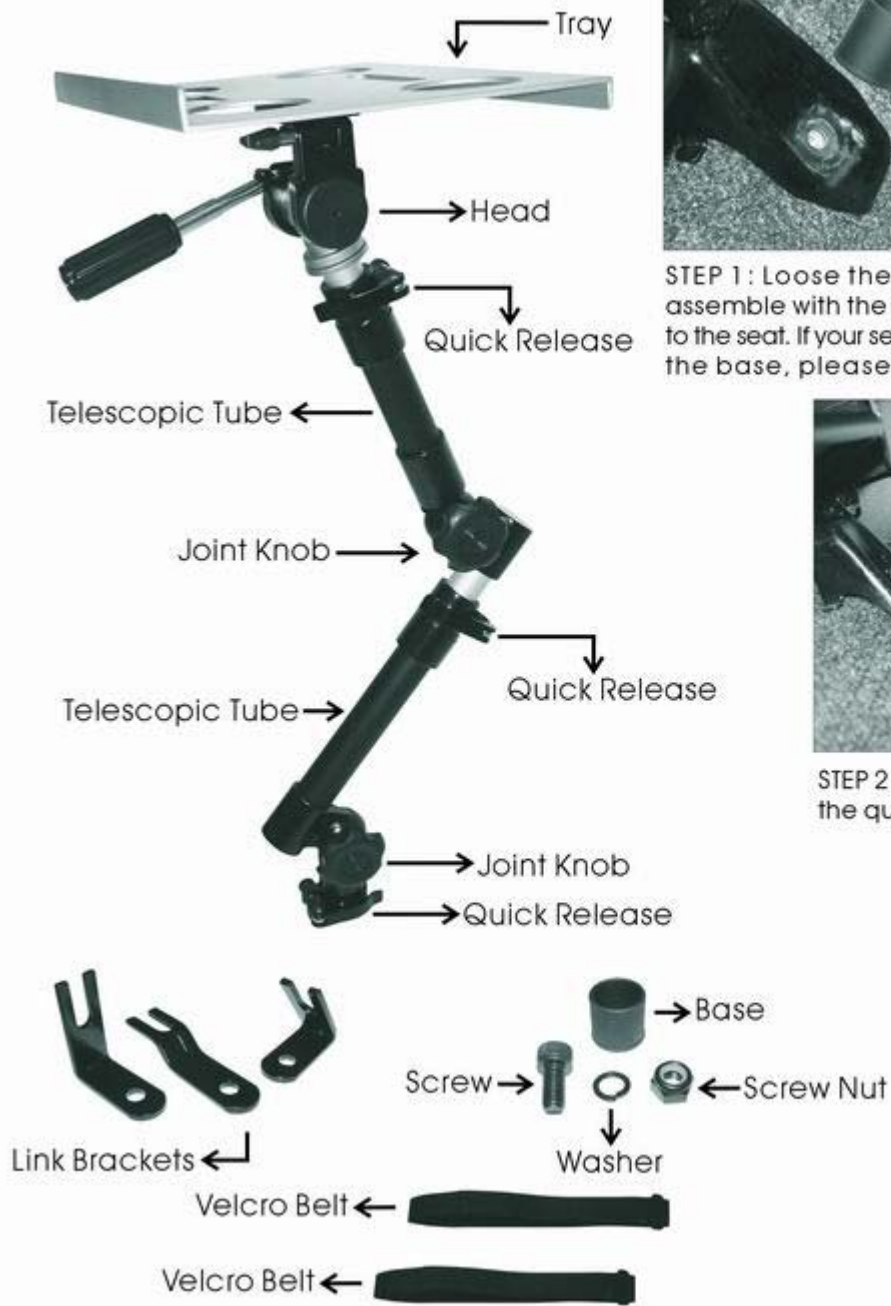
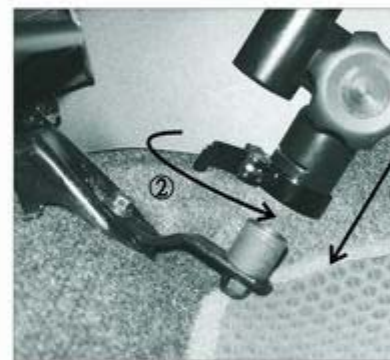


# INSTALL STEPS



STEP 1 : Loose the bolt of the seat, and assemble with the base, then screw back to the seat. If your seat is unable to assemble the base, please refer to step A and B.



STEP 2 : Put the stand on the base the quick release tightly.



STEP 5 :After being ac position, put the lap fasten it by velcro bel

---

## Operation & Assembly